

I

ITALPLANT

transfer systems



CPI



Pallet changers

ITALPLANT PALLET CHANGERS

1. UNIQUE DESIGN FOR RISING AND BALANCING
2. SPEEDER MOVEMENTS
3. VERY SMOOTH MOVEMENTS BECAUSE CYCLE INTERACTION
4. TOTAL CYCLE CONTROL ON INPUT AXIS
5. WATERPROOF AND HIGH RIGIDITY CAST IRON HAUSING
6. INPUT TORQUE LIMITER

GENERALITY

The Italplant C.P.I. are housed mechanisms designed to be fitted in machining centres.

Cams insure a continuous running, no noise, high accuracy.

The rising swing cycle could be designed as per customer's needs.

The input motion transmits a linear and rotation indexes on the output shaft.

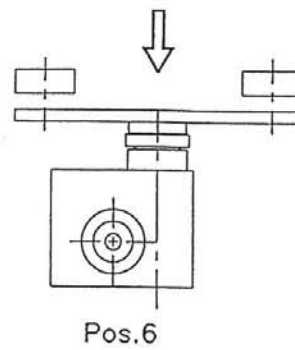
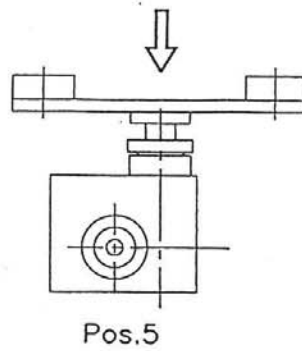
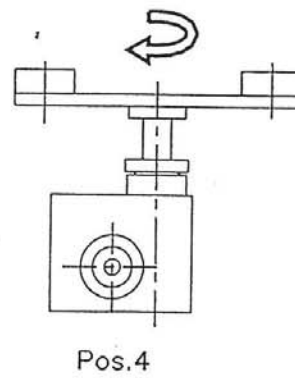
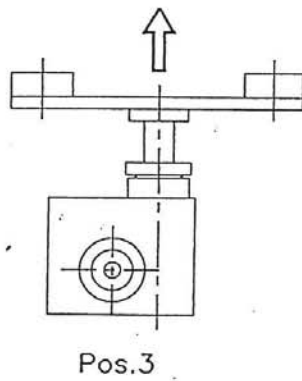
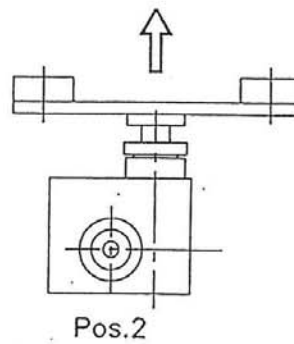
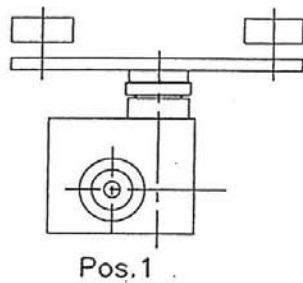
CPI SIZING

The size of C.P.I must be defined by the masses and cycle time requested.

Italplant will supply to the customer the computer sheets sizing as per customer's specifications.

TIMING SEQUENCE

1. Lower position
2. Rising to slow down position
3. Higher position
4. Rotation in high position
5. Fall to slow down position
6. Fall to lower position



SENSES OF ROTATION

Sense of rotations are referred to the output shaft.

They could be clockwise or under clockwise.

The input shaft rotation is always clockwise.

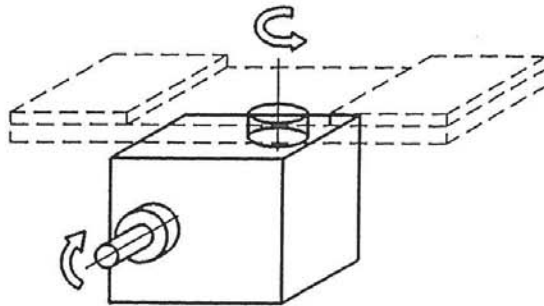


Fig. 1 Input rotation L

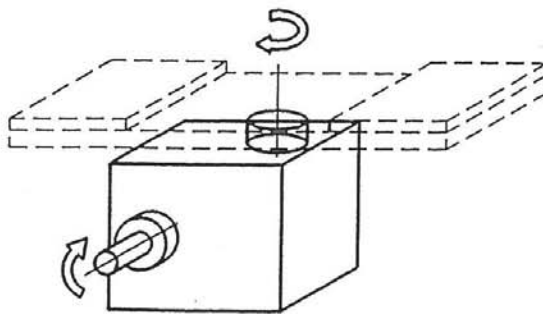
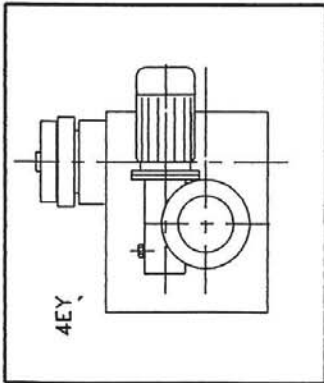
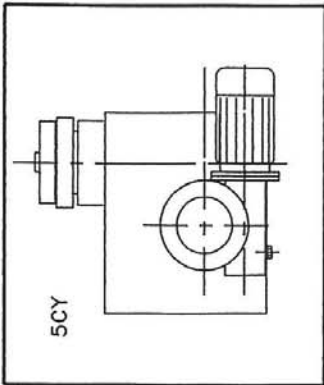
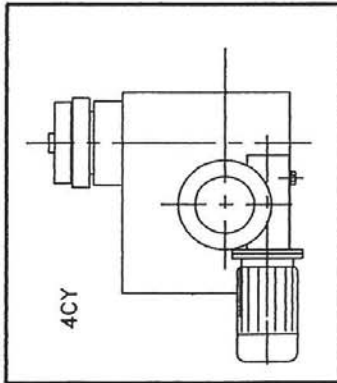
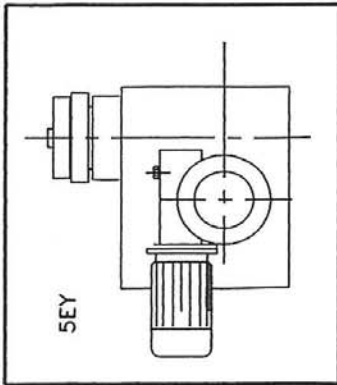


Fig. 2 Input rotation R

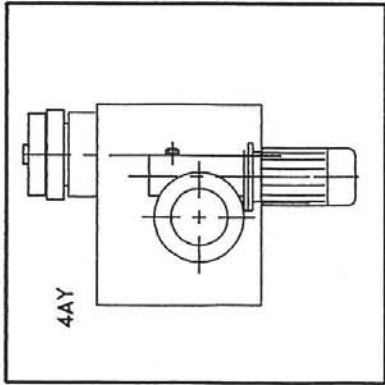
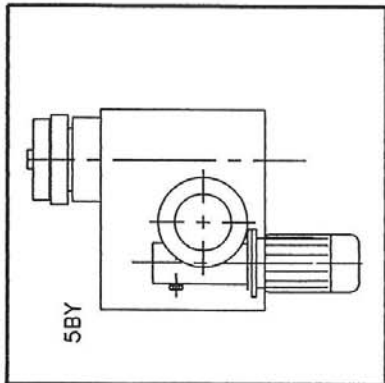
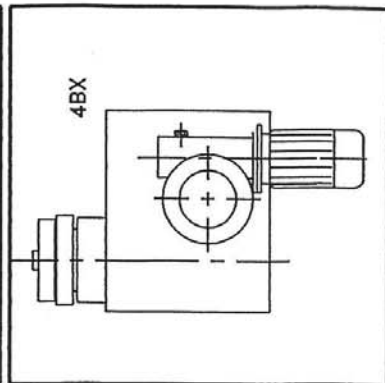
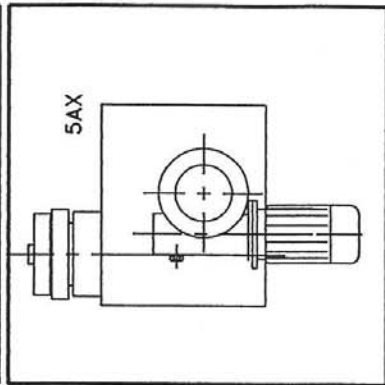
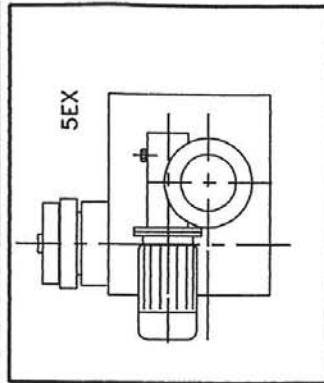
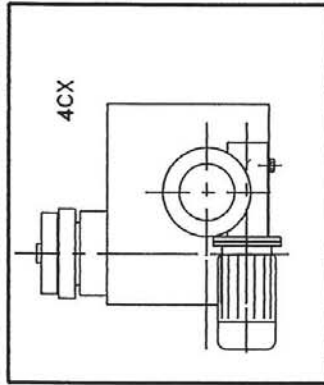
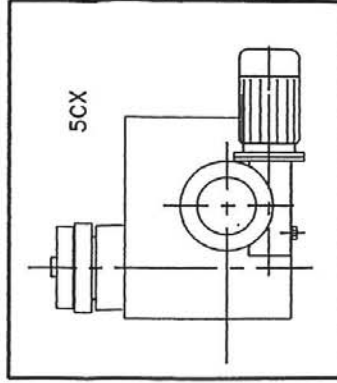
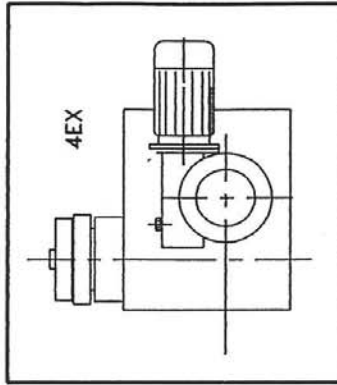
DIMENSIONS

	CPI 5	CPI 7	CPI 10
A	505	600	740
A1	20	20	35
B	420	460	640
C	550	600	825
D	150	180	160
E	390	450	650
∅ F	230	260	290
∅ G	180	220	288
H	160	160	315
I	140	178	254
∅ L	150	190	255
∅ M h7	100	150	70
N	395	435	600
O	50	80	100
P	90	110	110
Q	300	350	480
Q1	100	100	210
T	370	410	550
T1	205	217.5	343
U	260	280	415
V	125	80	100
Z	125	150	200
Z1	200	290	400
∅ D1	42	50	60
L1	350	370	600
a h7	10	10	20
b	M10	M10	M16
c	13	13	22
m	2	2	4
n	6	6	12
r	14	14	14
Cmax	60	75	90

REDUCER MOUNTING POSITIONS ON FACE "Y"



REDUCER MOUNTING POSITIONS ON FACE "X"



ASSEMBLYING

Always CPI must be fitted with the output shaft vertical. Could be fixed on side faces or horizontal faces.

CODE EXAMPLE

CPI 10-R-210-75-30-1-V-4CY

CPI 10: SIZE

R: SENSE OF ROTATION

210: ROTATION CAM ANGLE

75: TOTAL VERTICAL STROKE

30: SLOW DOWN POSITION

1: INPUT SHAFT SIDE

V: FACE WITH FIXATION HOLES

4CY: MOUNTING REDUCER POSITION



ITALPLANT DISTRIBUTORS IN THE WORLD – DISTRIBUTORI ITALPLANT NEL MONDO
ITALPLANT VERTRETERN IN DER WELT – ITALPLANT DISTRIBUTEURS DANS LE MONDE



GLOBOIDALCAM INDEXING UNITS HIGH SPEED 1000 RPM
*TESTE A DIVIDERE A CAMMA GLOIBOIALE
AD ALTA VELOCITA' 1000 C/1'*



**ADJUSTABLE TRANSMISSION TORQUE (ATT) WITH
SAFETY OUTPUT TORQUE LIMITER (SOTL)**
*INTERMITTORI CON REGOLAZIONE DELLA COPPIA TRASMESSA
E LIMITATORE DI COPPIA DI SICUREZZA IN USCITA*



PRECISION LINK CARRIERS
TRASPORTATORI A PASSO DI PRECISIONE



HIGH SPEED TOROIDAL INDEXERS
TESTE A DIVIDERE TOROIDALI AD ALTA VELOCITA'

PLEASE CONTACT OUR TECHNICAL OFFICE FOR FURTHER INFORMATION
CONTATTA IL NOSTRO UFFICIO TECNICO PER ULTERIORI INFORMAZIONI



Via Gonin, 45/A, 45/B - 10137 Torino (Italy)
Tel. + 39.011.30.92.177 - 30.99.485 - Fax + 39.011.30.95.080
www.italplant.com - e-mail: info@italplant.com